

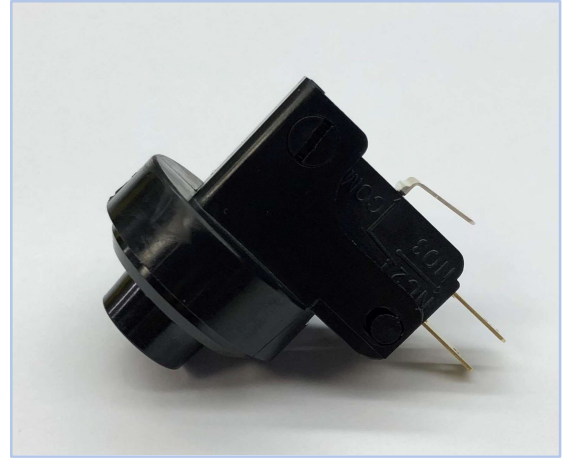
AT-2004 SERIES

Factory Pre-Set Switch

The AT-2004 Series of Pressure and Vacuum Switches are designed for applications where adjustability is not required and for the customer with cost and space limitations.

Applications Include:

Light Industrial, Process Control,
Controlling Compressors and Pumps,
Medical/Dental and HVAC Equipment.



SPECIFICATIONS

CONTACT FORM:	Single Pole, Double Throw
TERMINATIONS:	0.187" Quick-Connect
AGENCY COMPLIANCES:	UL/CSA Approved Microswitch
CURRENT RATING:	10 Amps and 1/4 HP, 125 or 250 VAC. 1/2 Amp 125 VDC.
OPERATING SPEED:	25 MSEC
STANDARD MATERIALS:	
Body:	Polycarbonate (Polysulfone or Noryl are Options)
U-Cup Seal:	Buna-N (Nitrile) - Other Elastomer Materials Available
Spring:	Stainless Steel (Wetted Material for the Vacuum Switch)
PORT CONNECTION:	Female 1/8" NPT (Mounting Bracket Available)

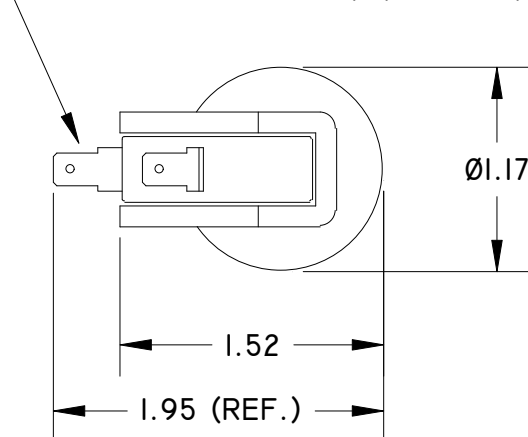
ORDERING INFORMATION

Pressure Switch PN: AT-2004-6
Pressure Only: 150 Psi Max.
Pre-Set @ 6 Psi +/- 1 Psi
<i>(Other setpoints available)</i>
Deadband approx. 0.5 Psi

Vacuum Switch PN: AT-2004-X4
Vacuum Only: 30"Hg Max.
Pre-Set @ 4"Hg +/- 1"Hg
<i>(Other setpoints available)</i>
Deadband approx. 1"Hg

DIMENSIONS

0.187 QUICK CONNECT TERMINATIONS



1/8" FEMALE NPT
(SHORT THREAD)

