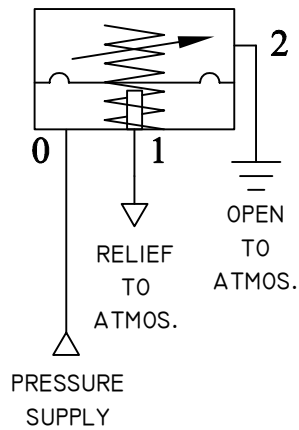


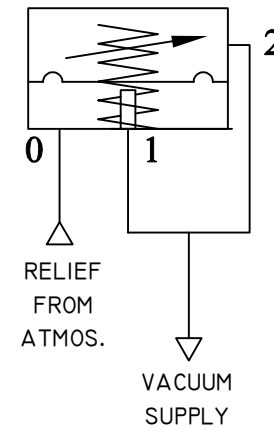
Comparator Style Relief Valves

- These parts are for "low flow" applications - up to 3 LPM - but they are very accurate and highly repeatable.

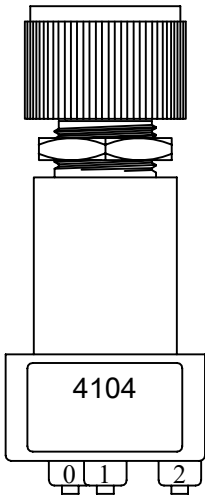
RVS-4104 SERIES (ADJUSTABLE) RELIEF VALVE FOR PRESSURE



RVSV-4104 SERIES (ADJUSTABLE) RELIEF VALVE FOR VACUUM

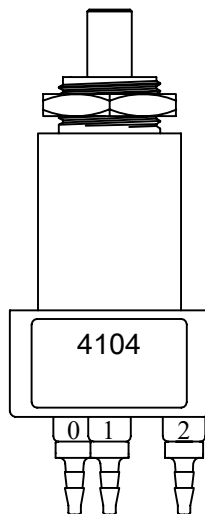


W/KNOB



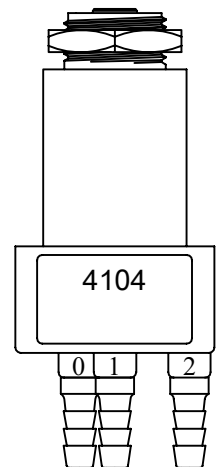
STANDARD PORTS
(FOR 1/16" ID TUBING)

W/SHAFT



P80 PORT OPTION
(FOR 1/16" ID TUBING)

W/O SHAFT



P85 PORT OPTION
(FOR 1/8" ID TUBING)

NOTE:

Preset and Manifold Mount options are available.
Contact the factory for more information.